

DIRECT TO GARMENT PRINTER

TexJet®
shortee²

**TONS
OF VALUE
IN A SMALL
PACKAGE**

Get your
money's worth!



polyprint®
DTG PRINTERS

Superior print quality | Easy to use | Simple to maintain

TexJet® shortee²

Includes

- **27x40 cm** (10.6x15.7 in) **SNAP-ON PLATEN**
- **CADLINK-RIP SOFTWARE**

Digital Factory Apparel Polyprint Edition v10

XL
PRINT AREA
30x45 cm
11.8x17.7 in

It can pay for itself within 3 months!

Think about it

Get your investment back **within the first quarter** by producing 60 customized t-shirts in 2 hours and selling only 25 t-shirts a day!

* Based on 20 darks and 45 whites with a 25x20 cm (10x8 inch) design, at 720x720 dpi CMYK and 1440x720 dpi white



IMPRESS YOUR CUSTOMERS

A small 3pl ink drop size achieves **scalpel-sharp details**. It's top-notch white ink density and coverage with a single pass, are **perfect for amazing prints**.



SWITCH BETWEEN FABRICS IN SECONDS

Its **automatic height adjustment** sets the ideal distance between textiles and printhead. Change from t-shirts to tote bags in a jiffy and **save time on your runs**.



LET IT SIT. NO INK LOSS

It stays idle up to a **month** without ink waste. Now it's **easy to save** on inks!



WORK FROM ANYWHERE

Its small size (L1100xW670xH425 mm/ L43xW26xH17 in) is **perfect for home-based businesses** or to serve customers **on site** at tradeshow and events!



MAKE YOUR LIFE EASIER

Enjoy **swift snap-on platen swaps** for smooth runs, let pop-up messages guide you, remotely diagnose issues and just follow a **5min maintenance routine**.

www.polyprintdtg.com



Tailor your TexJet® printer!

Choose an option that fits your needs for easy, fast and cost-effective production runs.



Ink Type

For superior DTG printing results:

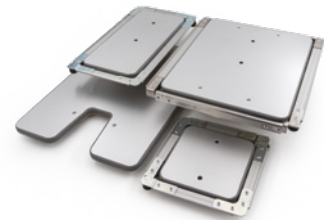
- **Dupont (CMYKW):** Impeccable performance and solid repeatability.
- **Power Inks (CMYK):** Gain 30% wash fastness and shorter fix times (high-volume runs/daily use).



Ink Setup & Supply

Lights, darks, or both? Changed your mind? Simply change your choice! **Shortee²** refillable cartridges are perfect for frequent runs and reduced costs.

- **CMYK +4W:** Standard for both lights and darks.
- **2x CMYK:** Only for light garments or prints without white ink.



Snap-on platens

Create a variety of personalized garments! Quickly swap **seven different-sized platens** (15x15 cm/ 5.9x5.9 in to 30x45 cm/ 11.8x17.7 in) and expand your personalized clothing portfolio. An adjustable frame* keeps all textiles flat.

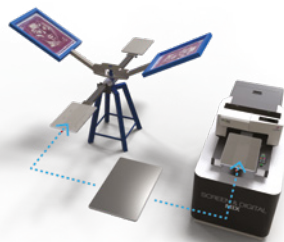
**Adjustable frames are available for the majority of platens*



Pre-treatment solutions

Guarantee sharp details and strong colors, wash after wash.

- **Dark textiles (P5001):** High print quality with rich colors and a soft touch
- **Light textiles (Polycoating):** Improved brightness, detailed accuracy, 30% increased wash fastness on light-colored cotton and polyester.



Screen & Digital mix/ Hybrid dtg system

Get the best of both worlds!

Skip pre-treatment, lower ink costs and add special effects to increase the value of your customized products. Screen print the white under base on darks and digitally print colors to save time and money.



Get started in the dtg world!

The compact, reliable, easy-to-use, yet affordable printer for busy entrepreneurs.

Contact our dtg professionals for a personalized ROI calculation and to find out whether shortee² is right for you!

Technical Specifications

MAX PRINT AREA	30x45 cm (11,8x17,7 in)
PRINTABLE TEXTILES	Cotton, light coloured polyester, cotton/poly blends, linen, viscose, leather, canvas, denim and more.
PRINT RESOLUTION	CMYK +4W: 720x720, 720x1080, 1440x720, 1440x1440 dpi 2x CMYK: 720x720, 720x1080 dpi
PRINT HEAD	Piezoelectric DOD, 8 channels, 180 nozzles per channel
HEAD HEIGHT	2,5 mm (0.1 in)
MEDIA THICKNESS	14 mm (0.5 in) max
PRODUCTION SPEED *	45 Light - 20 Dark t-shirts/hour
* Including loading/unloading time.	CMYK: 720x720 dpi - W: 1440x720 dpi Design size: 25x20 cm (10x8 in)
INKS	CMYKW, Water-based textile pigment inks
INK FEED	Pressurized Delivery Refillable cartridges, 80 ml (2.7 fl oz)
CONNECTIVITY	USB 2.0, 10/100 Ethernet
OPERATING SYSTEM	Windows 10
SOFTWARE	CADlink Digital Factory Apparel Polyprint Edition v10
POWER	AC 110-230V, 50-60Hz, 60-80W
OPERATING CONDITIONS	Range: 10-30° C (50-86° F) with 30-70% relative humidity Ideal: 20° C (68° F) with 55% RH
DIMENSIONS, WEIGHT	L1100xW670xH425 mm (L43xW26xH17 in), 68 kg (150 lbs)
PLATENS	Included Standard: 27x40 cm (10.6x15.7 in) (+frame) Optional Max size: 30x45 cm (11.8x17.7 in) Face Mask Platen Polo: 30x43 cm (11.8x16.9) 14x30 cm (+frame) (5.5x11.8 in) (+frame) 15x15 cm (5.9x5.9 in) (+frame) 27x32 cm (10.6x12.5 in) (+frame)

TexJet[®] shortee²



2021-02-09_TEXJET SHORTEE 2_BIFOLD_EN_V1.0